

Lockdown: Distributed Policy Analysis and Enforcement within the Enterprise Network



Andrew Blaich, Qi Liao,
Greg Allan, Brian Sullivan,
Aaron Striegel,
Douglas Thain
<http://netscale.cse.nd.edu/>

Problem: Managing, deploying, enforcing, and verifying security policy within an enterprise network.

Solution: By using a system of collection agents, data mining, visualization, and Linux Security Modules (LSM) Lockdown is able to achieve efficient policy creation, enforcement, and verification based upon the local context of a host.

Higher-Level Policy:

- Deny part-time employees from browsing the web.
- Allow full time employees to browse the web only using firefox.
- Allow condor-based grid jobs access to the network.
- Allow users to remote login throughout the network.
- Deny all other network activity.

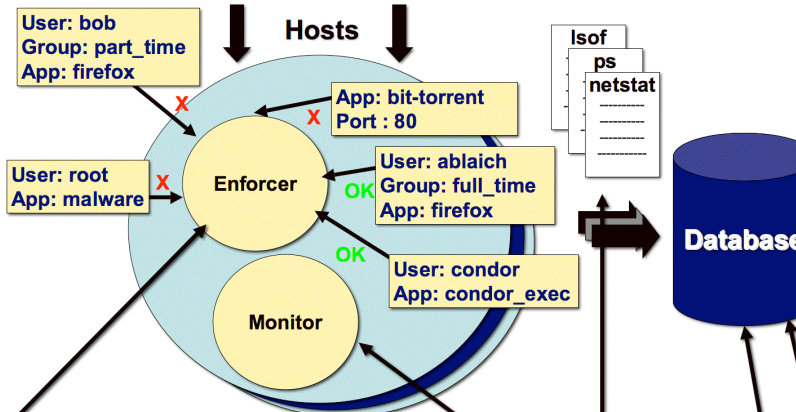
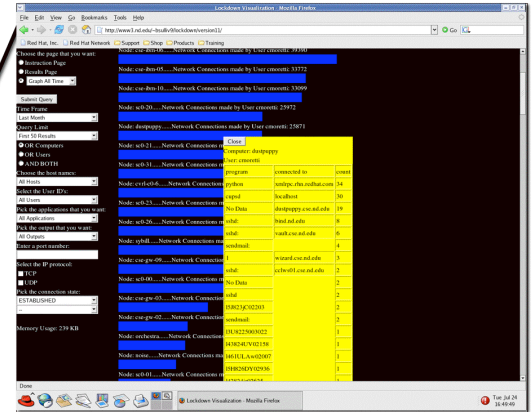
Lower-Level Policy:

[Allow/deny,machine,port,application,user,group,protocol]
allow,*,*,firefox,*,full_time,*
allow,*,*,condor_*,condor,*,*
allow,*,22,sshd,*,*,*
deny,*,*,*,*,*,*

Synopsis:

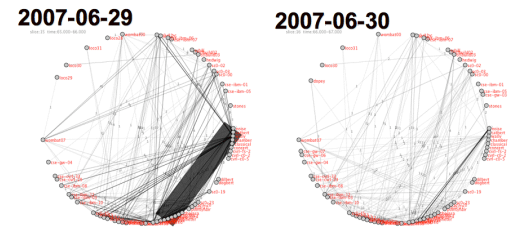
Traditional network security tools enforce a policy based on host addresses and port numbers. However, hosts and ports are often not sufficient to define a strong security policy. The Lockdown system allows a network security officer to define, distribute, and enforce a security policy that takes into account local context (such as username and application) in addition to hosts and ports. System activity is collected in a central database for monitoring and analysis.

Local Context:

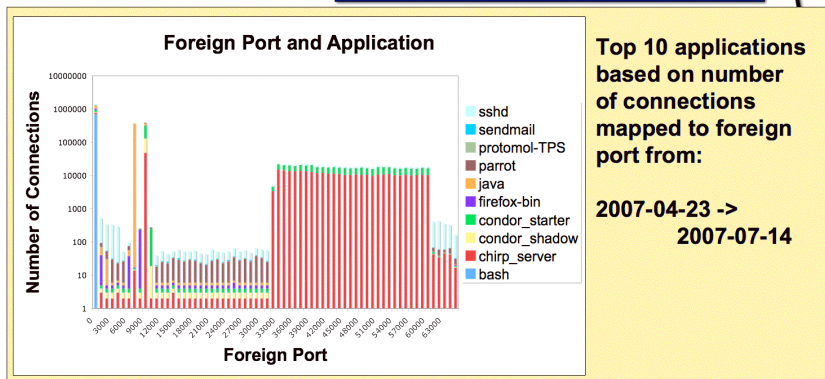


Network Visualization:

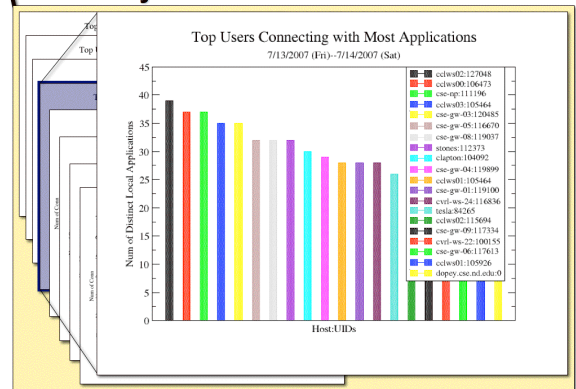
Host to Host Connections



Data Distribution:



Data Analysis:



Presented at USENIX Security '07 Poster Session, August 2007
This work is supported by NSF Grant CNS-05-49087

